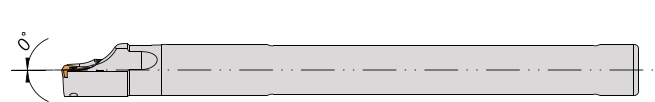
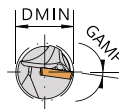
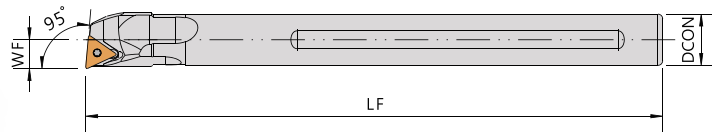
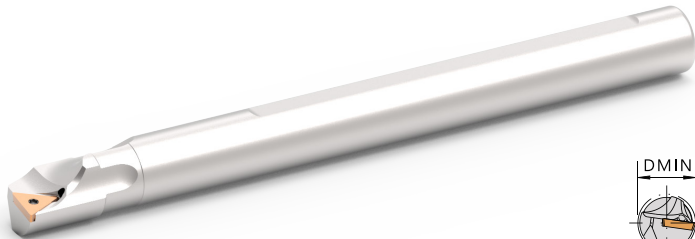
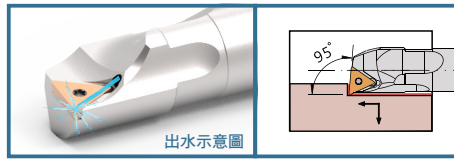


Boring Bar 內孔車刀

L-STLC-V

95°

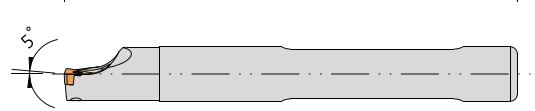
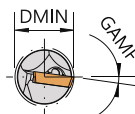
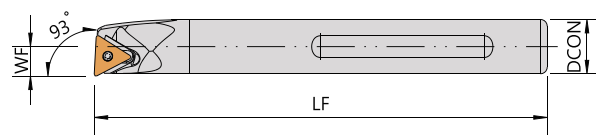
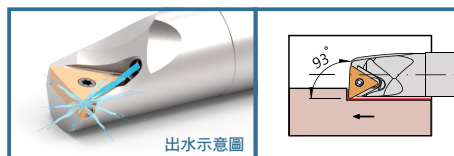


- Direct coolant supply through the turning tool.
- Shorten processing time by high cutting speed.
- 30 to 150% longer tool life for different kind of materials.
- Improved chip breaking, particularly at pressures above 40 bar.

Order No.	Insert	Dimensions(mm)						Parts	Wrench
		柄徑	工作寬度	長度	頭長	最小加工徑	徑向前角	刀片螺絲	板手
Right / Left		DCON	WF	LF	LH	DMIN	GAMF		
L08H-STLCR09-10V	TCMT0902	8	5	100	20	10	14°	CS22050	FT-7
L10K-STLCR09-12V		10	6	125	25	12	12°	CS22050	
L12M-STLCR11-14V		12	7	150	25	14	10°	CS25060	
L16Q-STLCR11-18V		16	9	180	31	18	8°	CS25060	

L-STUP-V

93°



- Direct coolant supply through the turning tool.
- Shorten processing time by high cutting speed.
- 30 to 150% longer tool life for different kind of materials.
- Improved chip breaking, particularly at pressures above 40 bar.

Order No.	Insert	Dimensions(mm)						Parts	Wrench
		柄徑	工作寬度	長度	頭長	最小加工徑	徑向前角	刀片螺絲	板手
Right / Left		DCON	WF	LF	LH	DMIN	GAMF		
L12H-STUPR09-13V-L21	TPMT0902	12	6.5	100	21	13	8°	CS35095	FT-15